

Health Education Collaborative Newsletter

*A message from the
CEO*



*Bruce Greaves
CEO/Director*

Welcome to issue 2.

Well, it has been a big start to 2020 for the HEC team.

Our clinical assessment course is up and running.

Our website has undergone some improvements making it easier to navigate with a cleaner look!

Course development is going full steam ahead with some great courses being released in the next two months.

We are in discussion with several organisations to form collaborative partnerships. Strategic collaborative partnerships provide a wonderful outcome for everyone, particularly the students who access these courses which are diverse, contextualised to their needs and ensure current best practice through clinical governance.

Margaret Villella Director and Director of Education has been accepted to present at the Australasian Institute of Clinical Governance conference (Melbourne) in March on Recognition of the Deteriorating patient, a passionate area of hers and HECs.

Did you know that *“Most preventable deaths in hospitals are a result of failure to recognise patient deterioration and intervene and that evidence shows that seriously ill ward patients often go unrecognised and receive suboptimal care resulting in serious adverse events” (Collegian 26 (2019) 33-39)*

The course in Clinical Assessment developed by HEC in collaboration with clinicians involved in simulation at major teaching hospitals, teaches clinicians the essential skills of good clinical assessment.

Bruce Greaves CEO/Director
Health Education Collaborative

Course Development

New course release

April will be a big month for new course releases.

We have been working closely with our new collaborative partners developing premium courses and high level skills training programs.

Developing a premium course takes time and a great deal of clinical scrutiny. We don't take short cuts in development and have a strict process that we work through to ensure the best course product is made available to our students.



Watch this space for updates over the next few issues as we are very excited about the courses that will be released.

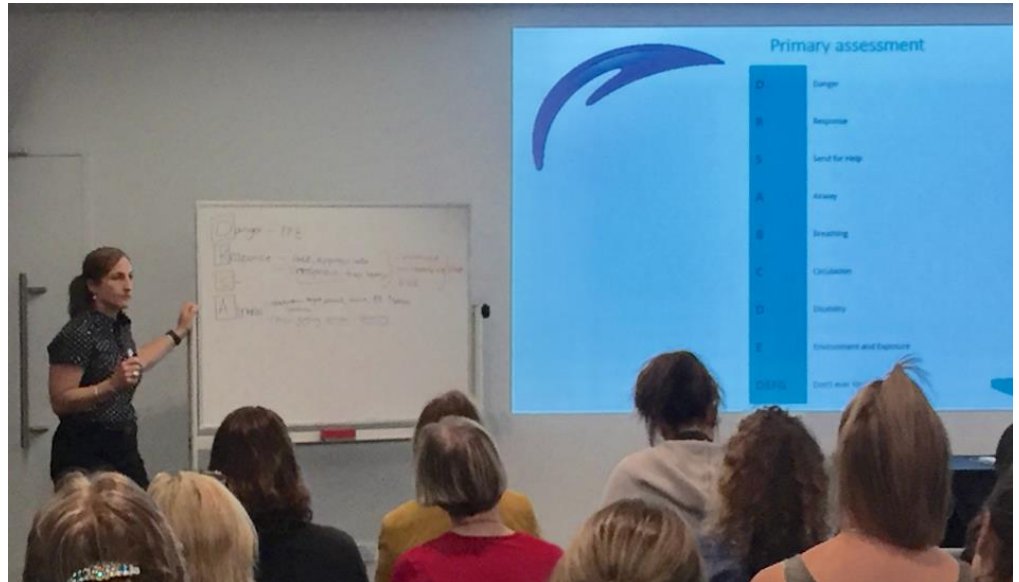
Clinical Update



Margaret Villella
Executive Director
and Director of
Education

Clinical Assessment

Clinical Assessment is a core skill for clinicians. I had the pleasure of presenting on Clinical Assessment for South Eastern Melbourne PHN Practice Nurses at Frankston and Dandenong. I presented an overview of the importance of these skills – a little snippet of what the HEC course in Clinical Assessment is all about.

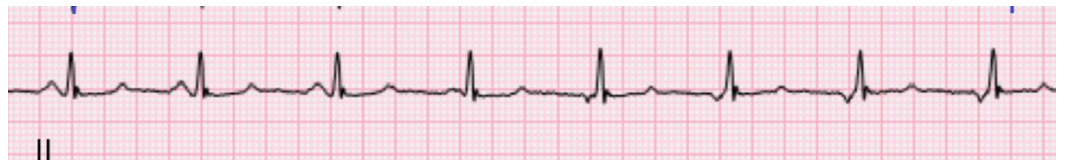


Click [HERE](#) to view the Course in Clinical Assessment or visit our Web site www.healthec.com.au

Clinical Question/Rhythm

Each month I will be posting a clinical question, rhythm strip or ECG to get you all thinking. I will post the answer the following month.

Do you know what this rhythm is?



Don't forget to be systematic in your approach!

If you are having trouble determining this rhythm, make sure you check out next month's newsletter!

In the Chat Room

In the Chat Room is a new segment in our newsletter. Each month we will be interviewing a health professional on a topic related to their area of expertise, research, special project or service.

This month we interview **Dr Christine Jackman MBBS FACEM MHPE** about good clinical assessment.



Christine is a Senior Emergency Physician, Senior Lecturer and Curriculum Lead at Eastern Health Clinical School for Monash and Deakin Universities, Senior facilitator for the Centre for Health Innovation

HEC: *Christine, why are you so passionate about teaching clinical assessment skills?*

Christine: Working in emergency has given me the opportunity to witness how deficiencies in clinical assessment can lead to poor patient outcomes through failure to recognise the unwell or deteriorating patient. Unfortunately when health care goes wrong patients often end up in emergency. I am also heavily involved in undergraduate medical education and have seen that there is a lack of role modelling of good clinical assessment from more experience

HEC: *How long have you been teaching clinical assessment skills?*

Christine: I have been involved in teaching for over 20 years with a particular focus clinical assessment in the past 6 years

HEC: *Why is it important for all clinicians to have good assessment skills?*

Christine: It can't be emphasised enough how important good assessment skills are in determining what is causing a patient's presenting illness but also in determining how unwell they are. Good clinical assessment and documentation also allows subsequent clinicians to make clear judgements about with a patient is improving or deteriorating.

HEC: *Who do you think would benefit from completing clinical assessment skills training?*

Christine: Anyone who is involved in direct patient care would benefit from this course.

HEC: *How does a thorough systematic assessment assist in recognising the deteriorating patient?*

Christine: Good systematic clinical assessment allows the clinician to make a clear assessment of a patient's current clinical status and to pick up

subtle signs of deterioration, for example an increase in respiratory rate and a change in cognitive status.

HEC: *What do you think are the benefits of simulation and scenario training compared to attending a lecture?*

Christine: There is good research evidence to suggest that learning is enhanced by interactive and problem focused education programs and that simulation allows the practice of that knowledge. Role modelling is so important in development of skills and simulation also provides the opportunity to see what it looks like to do things well.

HEC: *As an emergency physician, what do you see in bedside clinical practice that could be improved?*

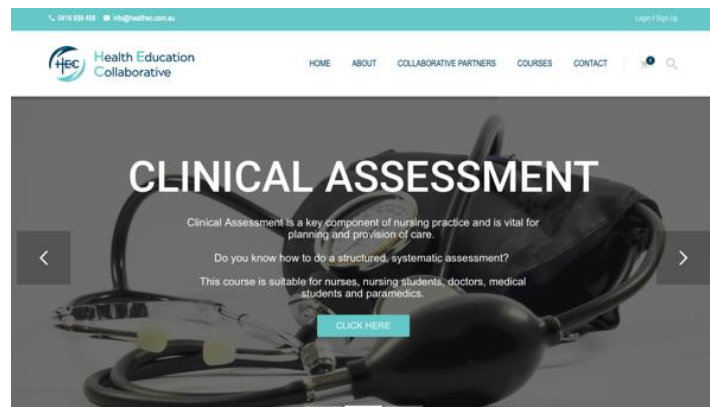
Christine: I often see cursory clinical assessments of patients which can lead to failure to recognise how unwell a patient actually is. I think anyone can recognise the patient who is severely hypotensive and tachycardic but it would benefit patients so much more if we could act well before they reach this stage.

HEC: *What would your advice be to clinicians about maintaining their clinical assessment skills?*

Christine: I think it is so important to actively reflect and how you are assessing your patients at regular intervals and consider how you might do this better. Are you being systematic? Are you making assumptions that may not be correct?

HEC: *You co-developed the Clinical Assessment course with HEC how did you find the process of working with us, and what do you think of the finished course product?*

Christine: This collaboration has been very rewarding and has allowed me to develop an educational program that I think is really beneficial in helping clinicians think more explicitly about how they perform clinical assessment.



Events

Practice Nurse Network Events



It has been fantastic working with South Eastern Melbourne PHN to deliver some very interactive workshops for their practice nurses. This month (as above) Margaret presented a two hour workshop on Clinical Assessment at two Practice Nurse Network Events, last year she presented workshops on the normal ECG.

If you would like us to present at any of your practice nurse events, please contact us on info@healthec.com.au or phone Marg on 0419939458.

Next Issue: March 2020



Contact us:

Marg: 0419 939 458 or Bruce: 0444 547 036

Web page: <http://www.healthec.com.au/>